

## Lifebuoy Light

### Lifebuoy Light M.O.B (LSA Code)

This lifebuoy light complies with the L.S.A code capable of burning continuously with a luminous intensity of not less than 2cd in all directions of the upper hemisphere for a period of at least 2h (at white colour). CE approved to SOLAS (L.S.A Code)\* by Bureau Veritas\*.



0062



Code....70030



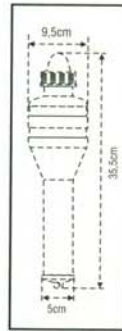
### Spare bulb for lifebuoy light



**Blister Bulb**  
4,8V/0,75A, E10  
Code....30650



**Bulb 4,8V/0,75A, E10**  
Code....00757

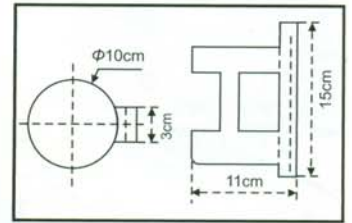


### Lifebuoy Light Holder

High quality black polycarbonate lifebuoy light holder. Designed to hold the light vertically in the 'off' position and provide easy removal in emergencies.



Code....70000



**Spring Clip**

Code....50530



For longer life, power up your Lifebuoy Light with two sets of alkaline batteries "X-ENERGY" (31339). More information on Lalizas Alkaline Batteries "X-ENERGY" on page 96

## Sea Anchors - Drogues

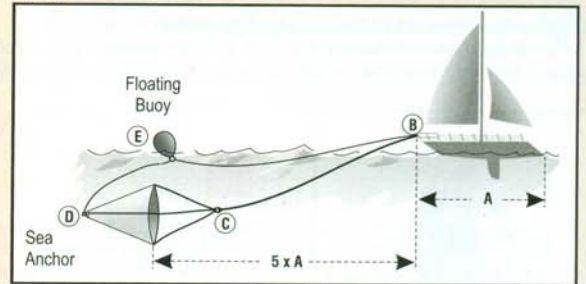
**ADVISOR**

**Use:** A Sea anchor, also called a drogue, is an essential part of your boat's safety equipment. They are used to slow down your boat or life raft when you are facing strong winds or heavy seas. Moreover they will ensure your boat turns so as to face into or away from the waves. A sea anchor can also be used to keep your boat as stationary as possible and not be affected by the wind, very useful when you are fishing or swimming in waters too deep to anchor.

**Instructions of use :** Made of strong-coated PVC, the drogue is open at both ends and includes lines that create two loops at the front and one loop at the end. The sea anchor (drogue) is tied to the boat's bow (B) with the use of a rope, which should be of at least five (5) times the boat's length (A). Tied to the bow of the boat, the rope is passed through the two loops of the drogue's front lines, creating a tight knot (C). The larger the size of your drogue (larger opening), the bigger its effectiveness will be.

In order to pull the drogue out of the water you should tie a second rope at the end loop of the drogue (D) - pulling this rope will allow the drogue to be withdrawn from the water.

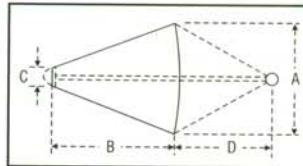
To warn and prevent other boats from running over the ropes of your drogue, you may use a floating buoy (E) that may be tied to the secondary rope. Drogues should never be used for permanent anchorage.



Safety



**BEST VALUE**



**ATTENTION:** This is a very general guide and there may be variations based on the weight, keel of the boat, even on the intended use of the sea anchor etc. Your choice should not be based only on the guide.

**BEST VALUE**



### Professional Sea Anchors - Drogues

Lalizas has designed the Professional Sea Anchor (Drogue) especially for use on large boats and under harsh conditions. The fabric is 200D polyester coated on both sides with 0,45mm PVC. Lalizas Professional Sea Anchors are immensely strong using 40mm, UV resistant, webbing terminating on a 6mm x 60mm INOX connecting ring. Lalizas drogues are supplied in a safety yellow colour, packaged in a handy, tough stowage bag.

Boats length	Code	A(cm)	B(cm)	C(cm)	D(cm)
15m (49ft)	10240	200	165	20	160
18m (59ft)	10241	250	210	25	200
21m (69ft)	10242	300	250	30	240

### Sea Anchor (Drogue)

Made of strong coated PVC with continuous webbing inside, for added strength. Suitable for boats between 4,5-12m.

Boats length	Code	A(cm)	B(cm)	C(cm)	D(cm)
4,5m (15ft)	10071	50	55	8	64
6m (20ft)	10072	65	75	10	70
7,5m (25ft)	10073	125	125	17	125
9m (30ft)	10074	135	142	20	125
12m (40ft)	10075	190	145	20	130

## Wood Drain Plug

**Wood Drain Plug, 5-45mm set of 10pcs**

Code.....90593

